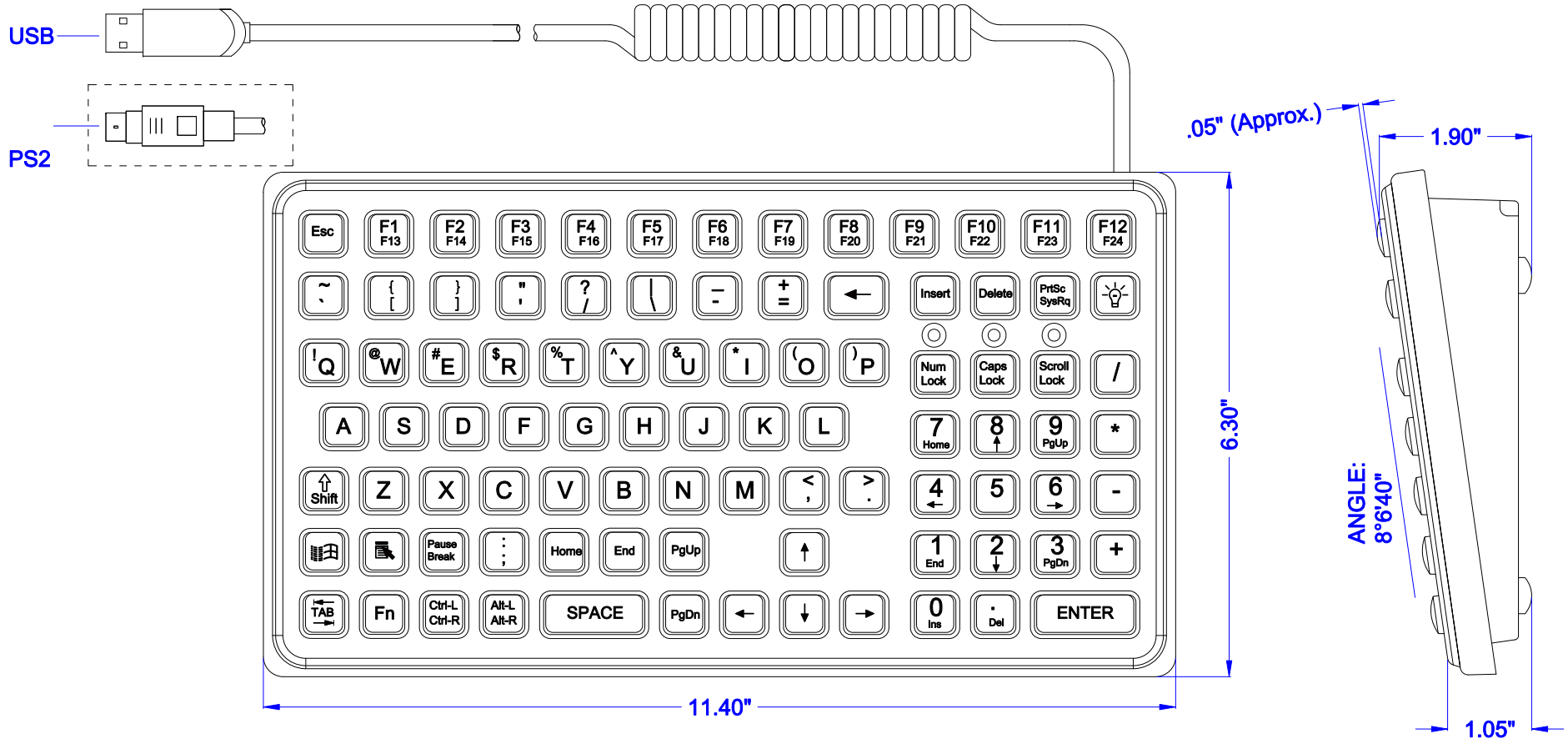


SL-91

DATE	CHANGES	REV
07.01.08	Original	1.00
08.25.08	Updated Format	1.00



KEY SWITCH

MATERIAL: Epoxy Coated Industrial Silicone Rubber
FACEPLATE MATERIAL: ABS/Polycarbonate
LIFE: Greater Than 10 Million Cycles
TRAVEL: 0.055 in.
ACTUATION FORCE: 7.03 oz. +/- 0.70 oz (200g +/- 20g)
FEEDBACK: Tactile with Mechanical Snap

POWER

PS2: KEYBOARD: 200mA@5V (from Keyboard port)
USB: 200mA@5V (from CPU port)

TEMPERATURE RANGE

STORAGE: -40°F to +194°F (-40°C to +90°C)
OPERATING: -40°F to +158°F (-40°C to +70°C)

HUMIDITY

100% Humidity Resistant

VIBRATION

POWER SPECTRAL DENSITY: .04g/HZ
FREQUENCY RANGE: 20Hz-2Khz
DURATION OF TEST PER AXIS: 3 hours

SHOCK

3 X 11 ms pulses of 50g on each of 3 axis

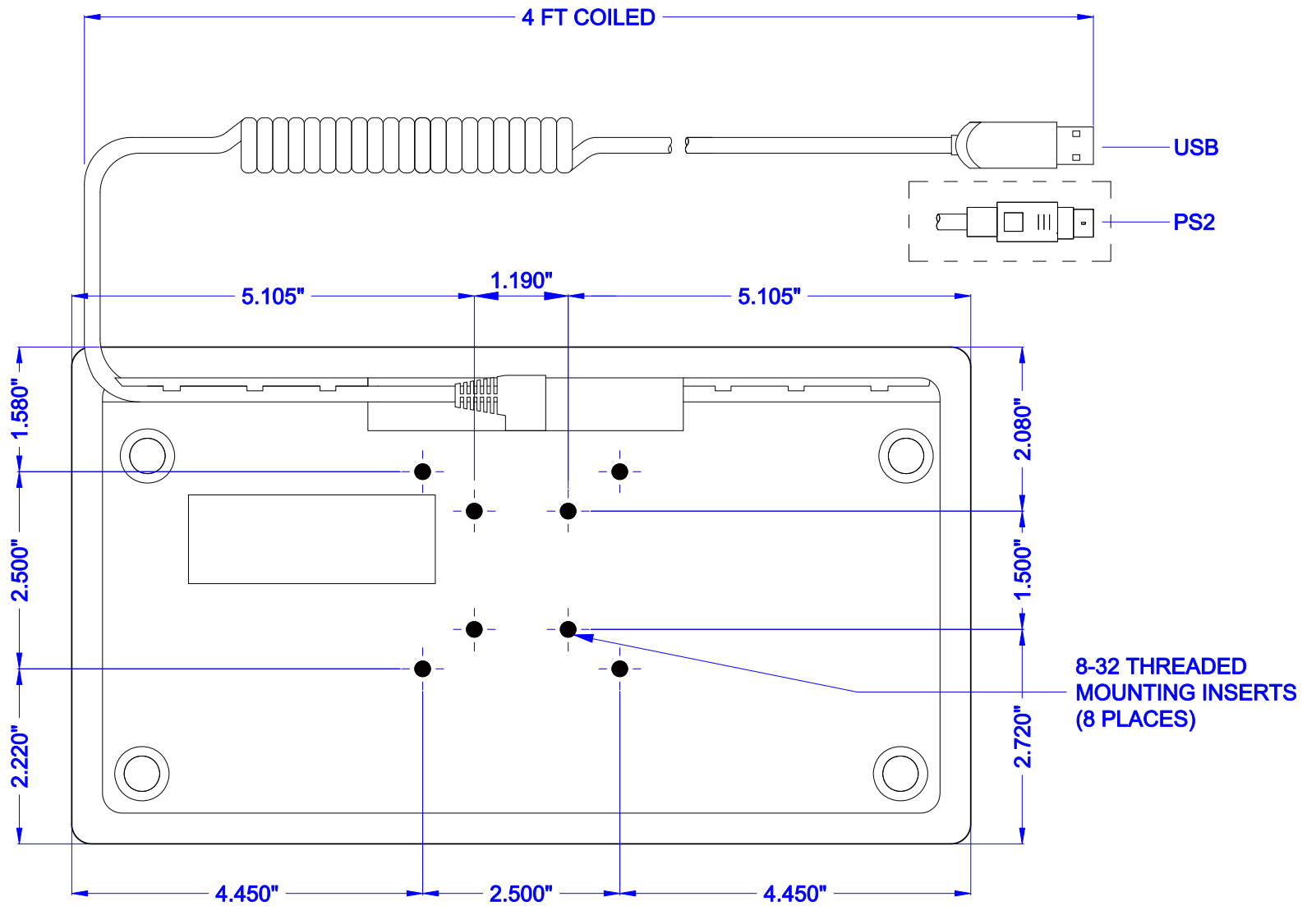
WEIGHT

2.25 lbs +/- 0.10 lbs (1.02 kg +/- 0.05 kg)

PROPRIETARY AND CONFIDENTIAL

SCALE 1:2

SL-91 BACK/MOUNTING



ENCLOSURE CASE: ABS/Polycarbonate

PROPRIETARY AND CONFIDENTIAL

iKey iKey, Ltd.
2621 Ridgpoint Dr. Suite 235
Austin, Texas 78754

©2008 iKey, Ltd.
Voice: (512) 897-0283
Fax: (512) 927-8830

Part Number: SL-91
Drawing Title: SL-91-MKT

Drawing Number: MKT0104
Revision: 1.00

Sheet: 2 OF 2
Date: 08.25.08
JWB