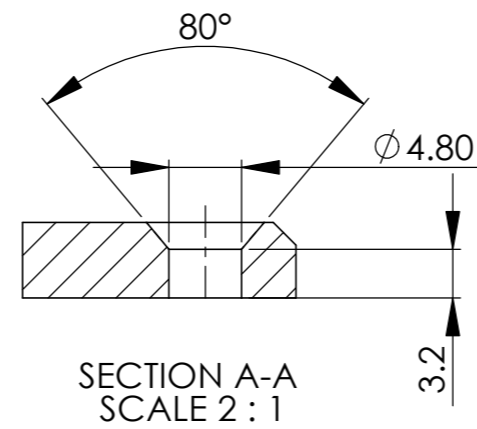
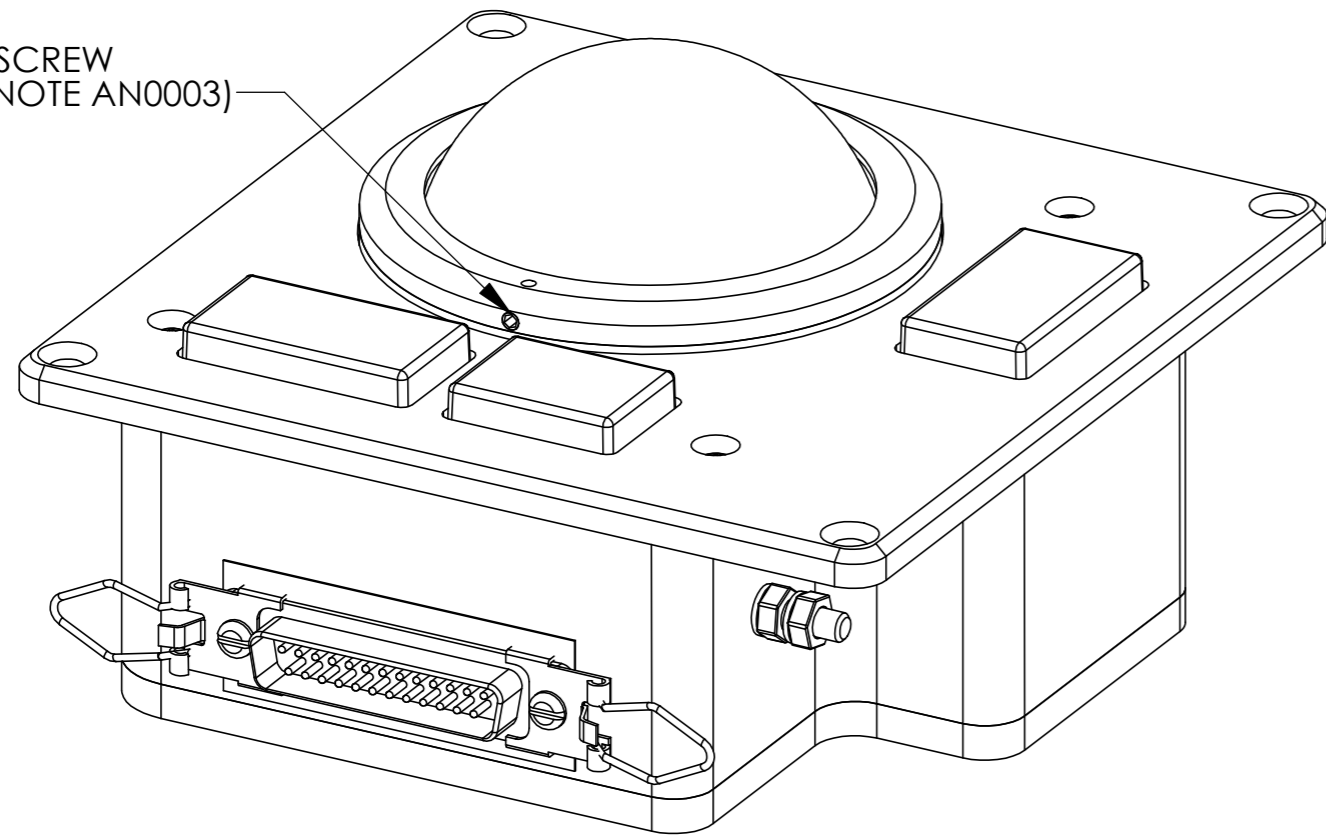
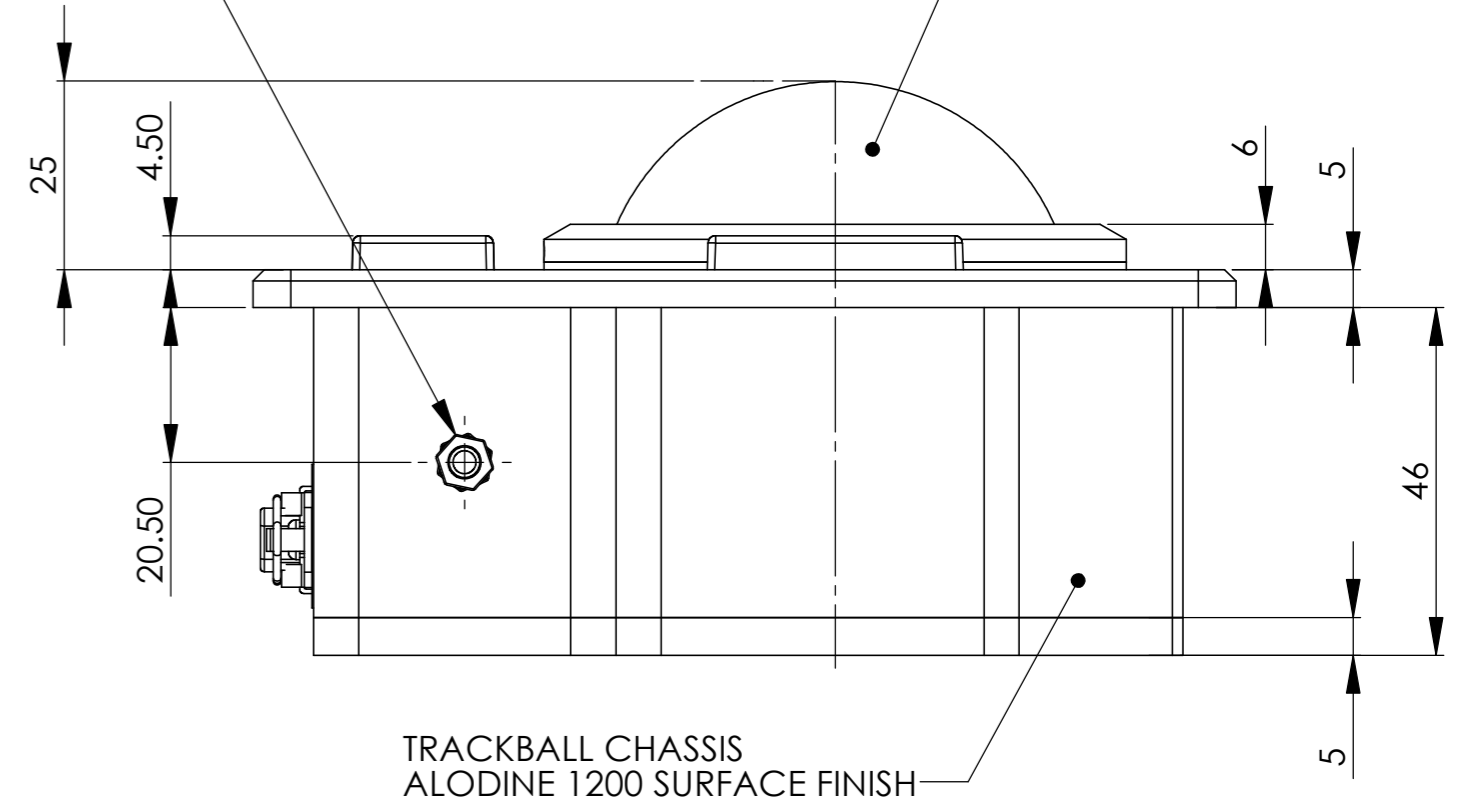


SERVICE LOCKING SCREW
(SEE APPLICATION NOTE AN0003)



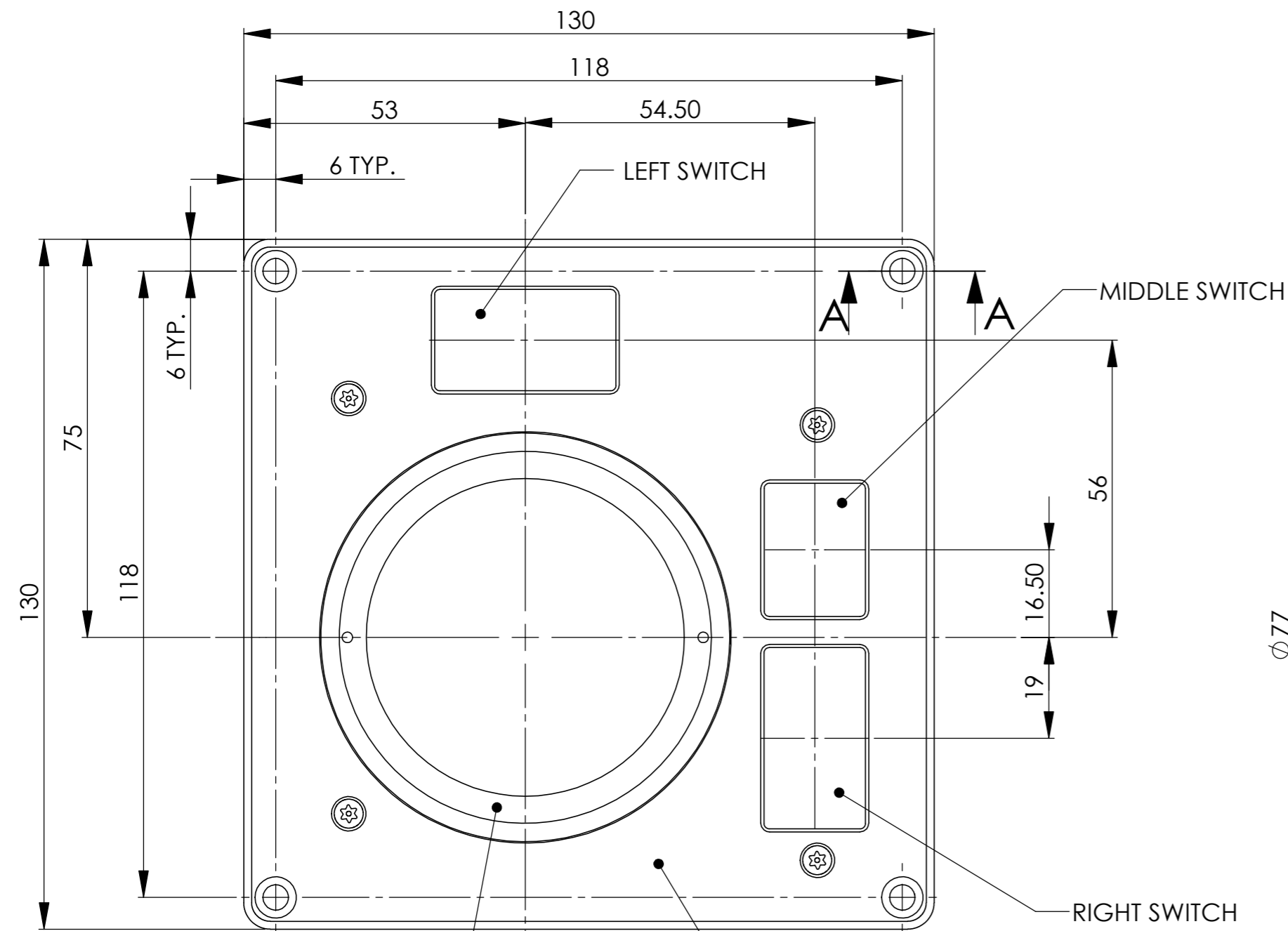
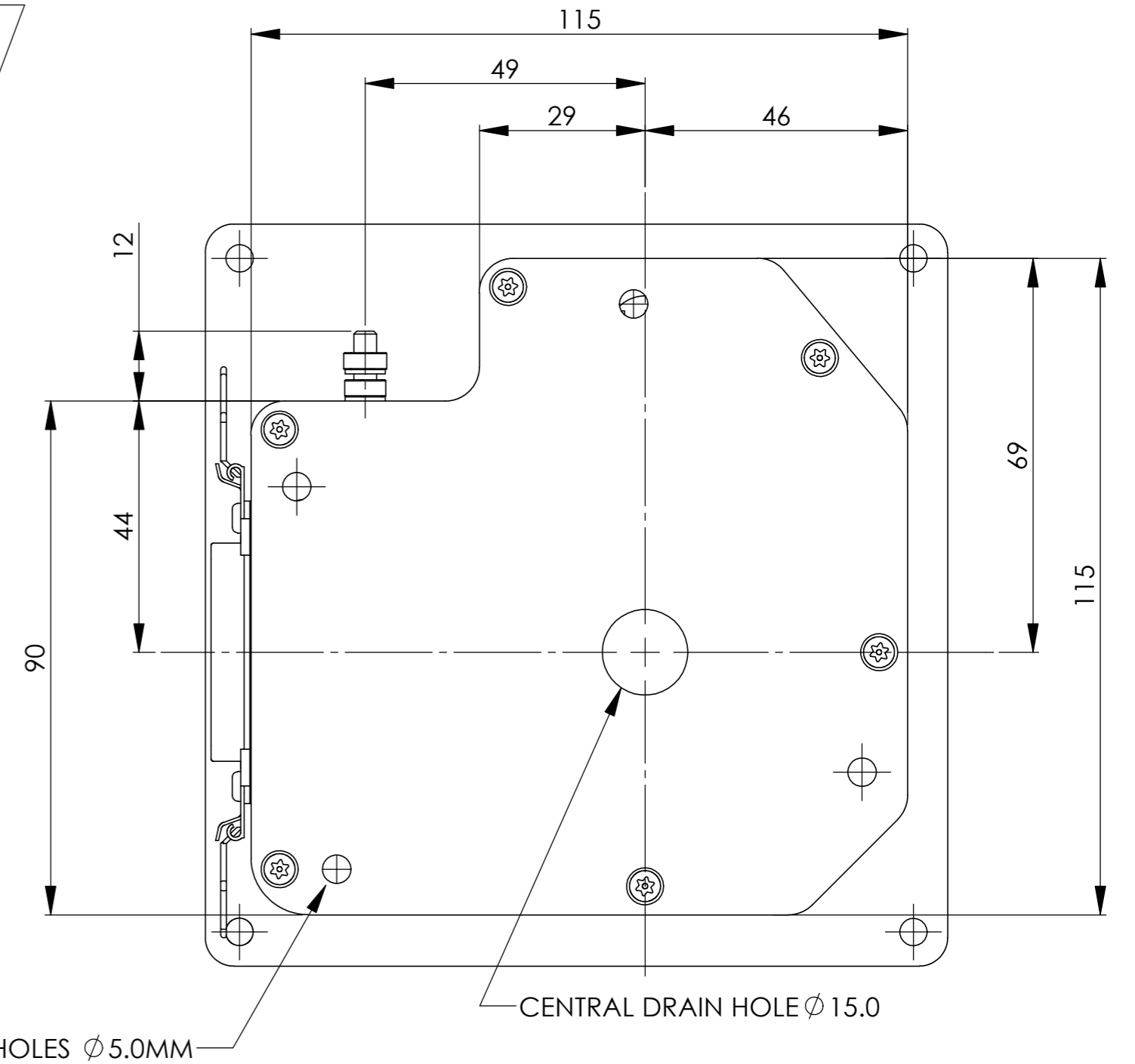
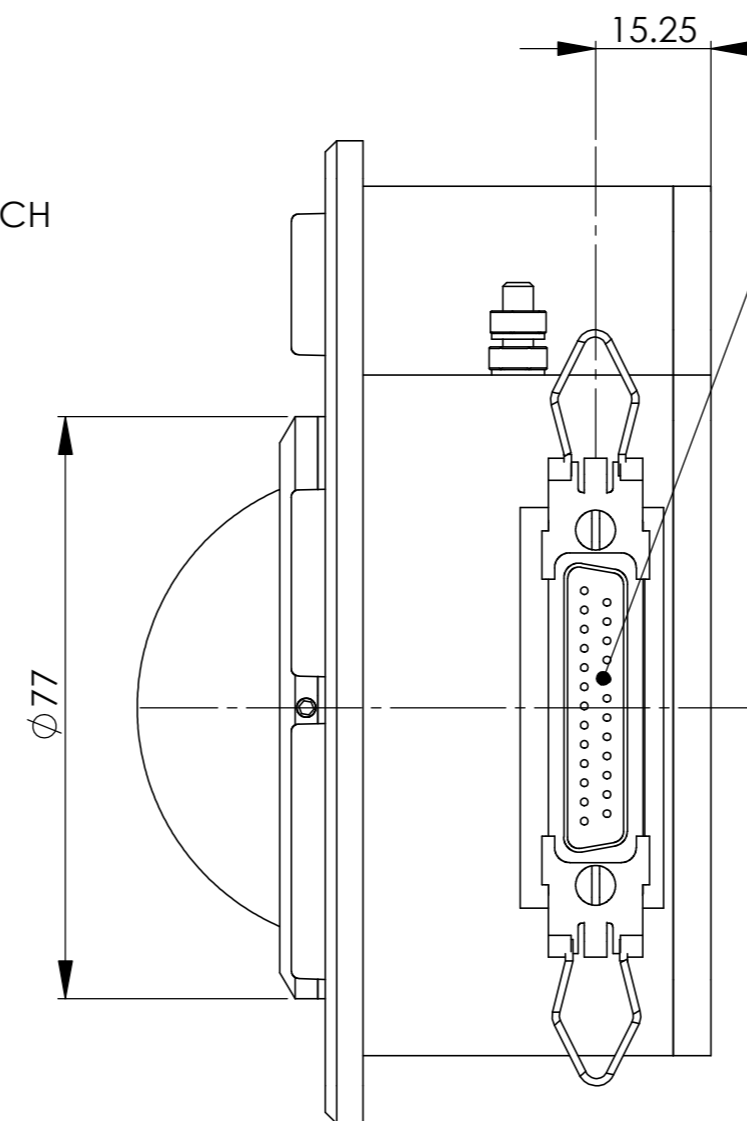
M4 GROUND CONNECTION

BALL Ø 63.2MM, BLACK

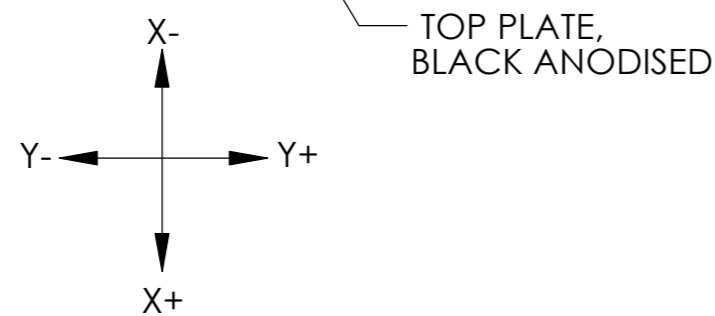


TRACKBALL CHASSIS
ALODINE 1200 SURFACE FINISH

CANNON 25 WAY D SUB CONNECTOR
PART No: DBMM25P
FITTED WITH SPRING LATCH D110277



REMOVABLE RING, BLACK ANODISED,
USER DEFINED FRICTION BY ROTATING
180° ANTI-CLOCKWISE



TOP PLATE,
BLACK ANODISED

UNLESS OTHERWISE SPECIFIED:
DIMENSIONS ARE IN MILLIMETERS
TOLERANCES:
X.X ±0.10
X.XX ±0.05
ANG ±1°

DRAWN TO BS8888



3RD ANGLE PROJECTION

Cursor Controls Ltd

© The information contained in this document is the copyright of CURSOR CONTROLS Ltd.
It may NOT be reproduced without written consent from the company.

GENERAL NOTES:
DEBUR AND BREAK SHARP EDGES
DO NOT SCALE

TITLE:
F60 TRACKBALL

MATERIAL (MUST BE RoSH COMPLIANT):
SEE DRAWING

FINISH: SEE DRAWING
SCALE: 1:1 SHEET: 1

DWG NO.
F60
REV:
A

| REVISIONS | | | | |
|-----------|-------|-------------------|--------|----------|
| REV. | DRAWN | DESCRIPTION | CN No: | DATE |
| A | N.S | RELEASE - CLASS B | | 31.07.08 |